



MILITARY AIRCRAFT



When selecting a hose and tube assembly partner for military aircraft applications, quality, service and performance are critical. With its aerospace pedigree, Aero-Hose, Corp.'s products undergo rigorous testing and quality verifications. With decades of experience and hundreds of thousands of assemblies manufactured, Aero-Hose, Corp. is the ideal partner for critical applications. From standard fuel and hydraulic lines to complex hose/tube combinations, Aero-Hose, Corp.'s products are found in military aircraft throughout the world. Whether the aircraft is used for combat, troop transport, aerial refueling or any other critical application, when choosing Aero-Hose, Corp., quality, service and performance are never a question. With an endless array of hoses to fit any pressure, a variety of end fittings in a multitude of materials and configurations, and sleeving options for extreme heat or high chafe installations, Aero-Hose, Corp. is the ideal partner.

R160 (240 SERIES):

The 240 Series is a lightweight high pressure 3000 PSI (207 Bar) aerospace hose qualified to AS1339. The hose consists of an extruded smoothbore PTFE innercore, reinforced with CRES 304 wire braid in a single layer on sizes -04 through -10, or a double layer on sizes -12 through -24. The PTFE innercore is conductive and provides excellent chemical resistance through a temperature range of -65°F to +400°F (-54°C to +204°C) with unlimited shelf life. The pre-tensioned braid gives 240 Series hose the tightest bend radius of any metal braided high pressure PTFE hose. The standard fitting material is CRES, but titanium is also available for weight savings. Fire protection per AS1055 Class A & B can be either integral or slip-on AS1072 firesleeve. Chafe sleeves are available in a variety of integral or slip-on materials. Hybrid assemblies combining flex hose with multi-bend tube are a Titeflex specialty and provide improved vibration dampening, ease of installation and maintenance over strictly rigid tube from sizes -16 to -24: less than AS1339 rating.

ENGLISH

HOSE SIZE	OPERATING PRESSURE	HOSE ID (MIN)	HOSE OD (MIN)	HOSE OD (MAX)	BRAIDED HOSE WT/1'	BEND RADIUS (MIN)/2'	PROOF PRESSURE	NEGATIVE PRESSURE	ROOM TEMP BURST (MIN)
	psi	in	in	in	lb/in	in	psi	in HG	psi
4	3,000	0.212	0.36	0.39	0.009	1.5	6,000	16,000	12,000
6	3,000	0.298	0.455	0.49	0.015	2.5	6,000	14,000	10,500
8	3,000	0.391	0.585	0.615	0.02	2.88	6,000	14,000	10,500
10	3,000	0.485	0.69	0.73	0.027	3.25	6,000	12,000	9,000
12	3,000	0.602	0.95	0.99	0.058	4	6,000	12,000	9,000
16	3,000	0.852	1.23	1.27	0.085	5	6,000	12,000	9,000
20	3,000	1.101	1.56	1.64	0.154	12	6,000	12,000	9,000
24	3,000	1.36	1.84	1.9	0.159	14	6,000	12,000	9,000

NOTES /1/ Over minimum 12 inch length /2/ Inside of bend

METRIC

HOSE SIZE	OPERATING PRESSURE	HOSE ID (MIN)	HOSE OD (MIN)	HOSE OD (MAX)	BRAIDED HOSE WT/1'	BEND RADIUS (MIN)/2'	PROOF PRESSURE	NEGATIVE PRESSURE	ROOM TEMP BURST (MIN)
	bar	mm	mm	mm	g/m	mm	bar	mm Hg	bar
4	207	5.4	9.1	9.9	161	38.1	414	1 103	827
6	207	7.6	11.7	12.45	268	63.5	414	965	724
8	207	9.9	14.9	15.62	357	73	414	965	724
10	207	12.6	17.8	18.5	482	82.5	414	827	621
12	207	15.6	24.1	25.15	1 036	98.5	414	827	621
16	207	21.6	31.2	32.3	1 518	127	414	827	621
20	207	28	41.7	41.7	2 753	304.8	414	827	621
24	207	34.5	46.7	48.3	2 842	355.6	414	827	621

NOTES /1/ Over minimum 305mm length /2/ Inside of bend

SERIES: 240

SPECIFICATION: SAE AS1339

BRAID: CRES

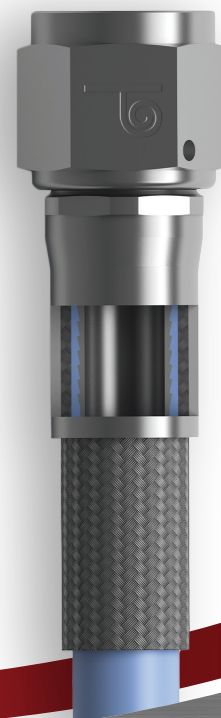
INNERCORE: PTFE Smoothbore

QUALIFICATIONS:

SAE AS1339

TSO C75 Type IIIB-S/P-F

AS1055 Type IIa & IIb, Class A & B,
Integral and Slip-on Firesleeve



1845 Town Center Blvd. #140, Orange Park, FL 32003
(904) 215 -9638 www.aero-hose.com

